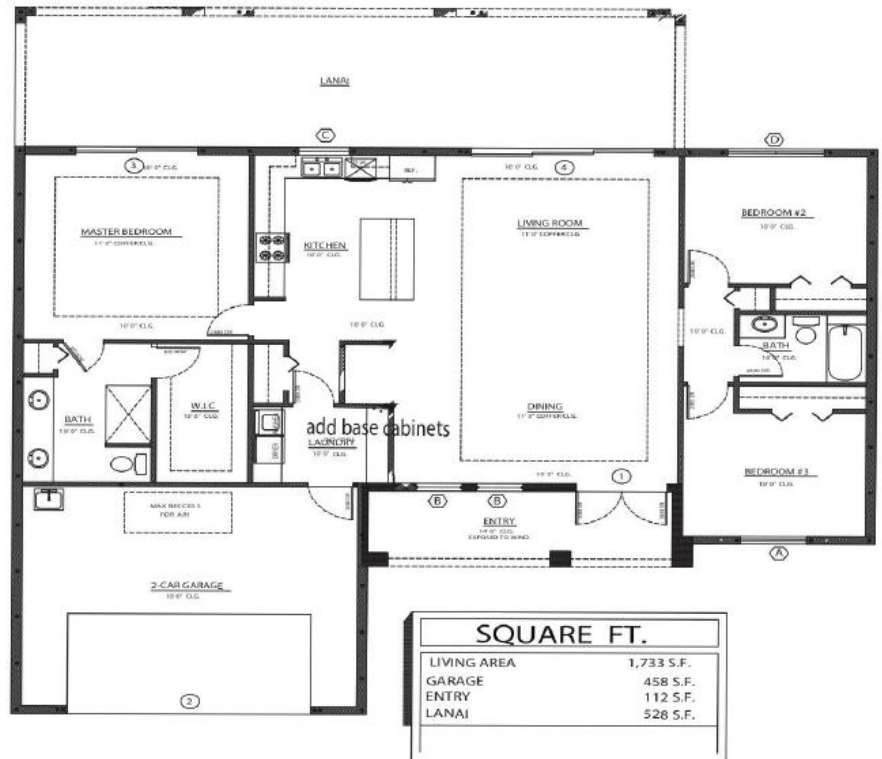


## MALLORCA

### HOUSE FEATURES

- 10" tie beam and 11' in Living area
- Brick paver
- Shingle Roof
- Hurricane impact windows
- Upgraded High Glossy European, comfort height cabinets with self close and adjustable shelves
- Upgraded Granite countertop with waterfall
- Stainless steel Appliances
- Moen plumbing trim
- Tile Flooring all around
- 5 1/2 baseboard



GALEXADIAMOND